

A Brief Introduction to the BMC Members' Council

Aims and Ambitions of the Members' Council

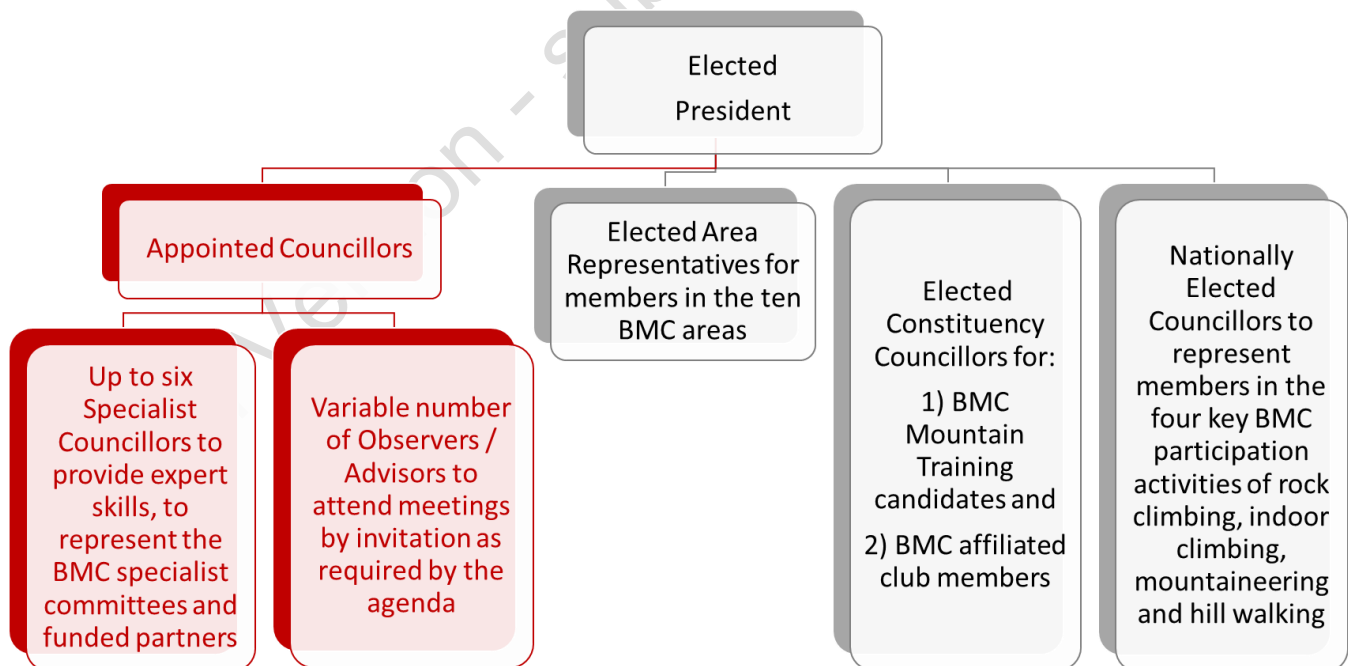
The Members' Council (the Council) is a non-executive group of volunteers, which exists to act as the representative body for BMC members, to represent their interests to the Board of Directors.

The approach adopted by the Council is to fully support the BMC Strategy and Vision, which is to ensure '**a better future for climbers, hill walkers and mountaineers**'. To achieve this Council has set itself four primary ambitions:

1. Engagement with the members
2. Engagement with all parts of the BMC
3. Role of Critical friend to the board
4. Outreach beyond the BMC core business

Structure of the Council

The Council is chaired by the President and is made up of elected Councillors, appointed Councillors and Observers. All elected Councillors represent their constituency or specified area of interest and have a vote on Council. Appointed Councillors provide expert skills and advice to Council, and consist of Specialist Councillors, who have a vote, and Observers who don't. The outline structure is shown below:



Specialist Councillors are appointed from the Specialist Committees which represent areas of particular importance to the membership and thus Council (including Access, Clubs,

Competition Climbing and Funded Partners). Observers are invited by Council and include BMC directors & staff, other Specialist Committees, Partner organisations and more. Further details on the structure and workings of Council are described in the Council Terms of Reference (ToR).

Councillor Responsibilities

Council is made up of volunteers who have a non-executive role but are expected to attend Council meetings and participate actively in Council business, such as sitting on committees or ad-hoc working groups. Councillors bring considerable expertise, which is highly valued by Council and the BMC as whole. Councillors are ambitious on behalf of the BMC and act in its best interests. It is a demanding role and has the following general responsibilities:

- Adhere to the principles of the Council Code of Practice
- Contribute to and help plan the Council Agenda
- Behave in a way that earns the trust of others, respect each other and act with integrity and value diversity
- Understand the balance and interaction between Council and the Executive (i.e. the Board, CEO & Staff)
- Make a positive and enthusiastic contribution to supporting the BMC's Strategy and Vision
- Represent the interests of Mountaineering and all mountaineers within the UK, as well as BMC members
- Participate in a positive & constructive manner, to enable Council to operate as a cohesive group with collective responsibilities
- Build good working relations with other Councillors and BMC volunteers
- Use judgement where issues are discussed and decided upon by Council without prior consultation with Members
- Be prepared to analyse complex issues during collective decision-making
- Become familiar with the technologies and working practices used by Council
- Keep abreast of BMC communications and mountaineering generally

See the full Councillor Role Description for more details.

Confidentiality & Impartiality

Whilst working to be as open and transparent as possible, as well as honouring their primary responsibility to the Members, Councillors will at times be privy to information that must be kept confidential. In addition, Councillors should always aim to remain impartial irrespective of their own views, both when reflecting the views of the Members they represent to Council/Board, or communicating information from the BMC to the Membership. See the Council ToR for full details.